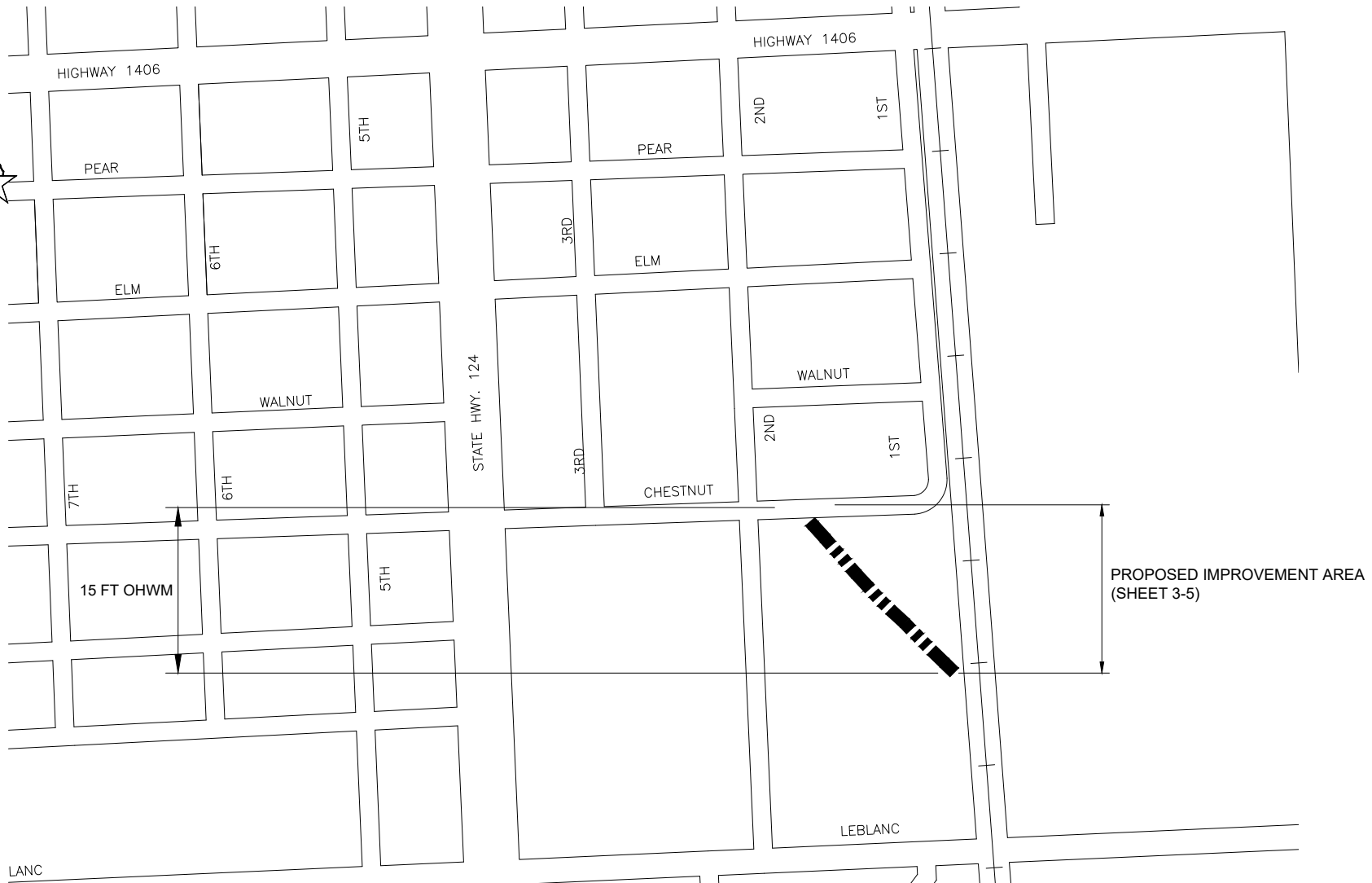


FIGURE 1 - SITE VICINITY MAP

| | | | | |
|--|--|--------------------------------|--|--|
| | Project #: <u>B818-1003.600</u> | Project Boundary (±) 900 LF | BERG + OLIVER ASSOCIATES ENVIRONMENTAL SCIENCE & LAND USE CONSULTANTS 14701 ST. MARY'S LANE, SUITE 400 HOUSTON, TEXAS 77079 PHONE (281)589-0898 www.bergoliver.com | |
| | For: <u>Chambers County</u> Location: <u>Southeast of Highway 124 & East Elm Ave.</u> Chambers County, Texas | | | |

Plot Date : 10/30/25
C:\PROJECTS\LJA\B000 - BXXX\B818 - CHAMBERS COUNTY MAYHAW BAYOU DRAINAGE IMPROVEMENTS\CAD\ENVIRONMENTAL\01_DITCH_LOCATION-REV.DWG



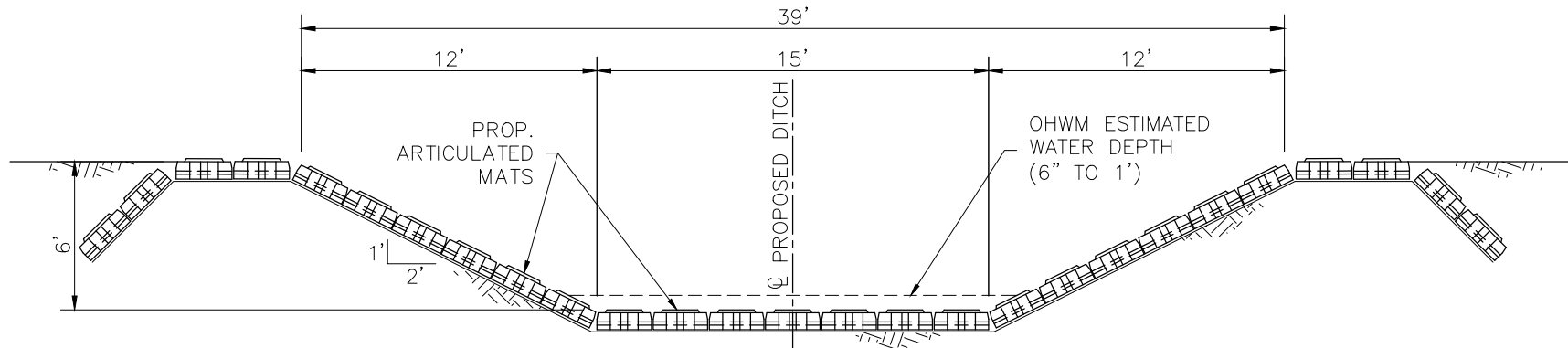
| REV. | REVISION DESCRIPTION | DATE | NAME |
|------|----------------------|------|------|
| | | | |
| | | | |
| | | | |

CHAMBERS COUNTY, TEXAS MAYHAW BAYOU DRAINAGE IMPROVEMENTS

LJA Engineering, Inc.
2615 Calder Avenue, Suite 500 Phone 409.833.3363
Beaumont, Texas 77702 Fax 409.833.0317
FRN - F-1386

DITCH LOCATION


| Action | Name | Date |
|----------|-----------|---------|
| Design | CC | 10/2025 |
| Drawn | DBT | 10/2025 |
| Checked | CC | 10/2025 |
| Approved | CC | 10/2025 |
| Scale | 1" = 500' | |
| Sheet | 1 Of 10 | |



**TYPICAL
 CROSS SECTION**
 ARMORED DITCH
 SCALE: 1" = 10'

| REV. | REVISION DESCRIPTION | DATE | NAME |
|------|----------------------|------|------|
| | | | |
| | | | |
| | | | |

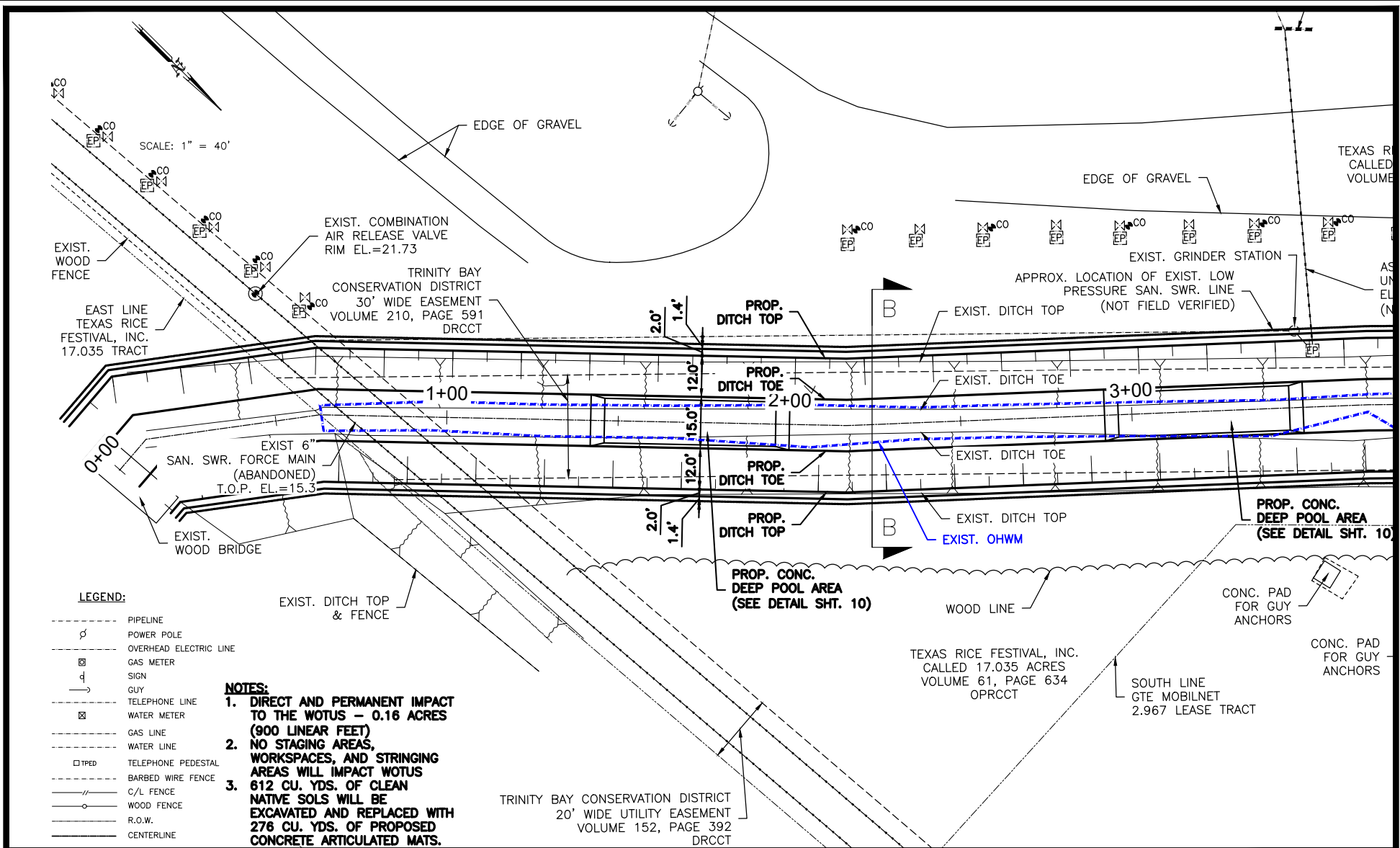
CHAMBERS COUNTY, TEXAS
 MAYHAW BAYOU DRAINAGE IMPROVEMENTS

LJA Engineering, Inc. 
 2615 Calder Avenue, Suite 500 Phone 409.833.3363
 Beaumont, Texas 77702 Fax 409.833.0317
 FRN - F-1386

PROPOSED DITCH SECTION

| Action | Name | Date |
|----------|----------|---------|
| Design | CC | 10/2025 |
| Drawn | DBT | 10/2025 |
| Checked | CC | 10/2025 |
| Approved | CC | 10/2025 |
| Scale | 1" = 10' | |
| Sheet | 2 Of 10 | |

Plot Date : 10/30/25
C:\PROJECTS\LJA\B000 - CHAMBERS COUNTY\1003 CHAMBERS COUNTY MAHAW BAYOU DRAINAGE IMPROVEMENTS\CAD\ENVIRONMENTAL\DEEP POOL AREAS.DWG



LEGEND:

- PIPELINE
- ⊕ POWER POLE
- OVERHEAD ELECTRIC LINE
- ⊠ GAS METER
- ⊠ SIGN
- GUY
- TELEPHONE LINE
- ⊠ WATER METER
- GAS LINE
- WATER LINE
- TPED TELEPHONE PEDESTAL
- BARBED WIRE FENCE
- C/L FENCE
- WOOD FENCE
- R.O.W.
- CENTERLINE

NOTES:

1. DIRECT AND PERMANENT IMPACT TO THE WOTUS - 0.16 ACRES (900 LINEAR FEET)
2. NO STAGING AREAS, WORKSPACES, AND STRINGING AREAS WILL IMPACT WOTUS
3. 612 CU. YDS. OF CLEAN NATIVE SOLS WILL BE EXCAVATED AND REPLACED WITH 276 CU. YDS. OF PROPOSED CONCRETE ARTICULATED MATS.

TRINITY BAY CONSERVATION DISTRICT
20' WIDE UTILITY EASEMENT
VOLUME 152, PAGE 392
DRCT

| REV. | REVISION DESCRIPTION | DATE | NAME |
|------|----------------------|------|------|
| | | | |
| | | | |
| | | | |

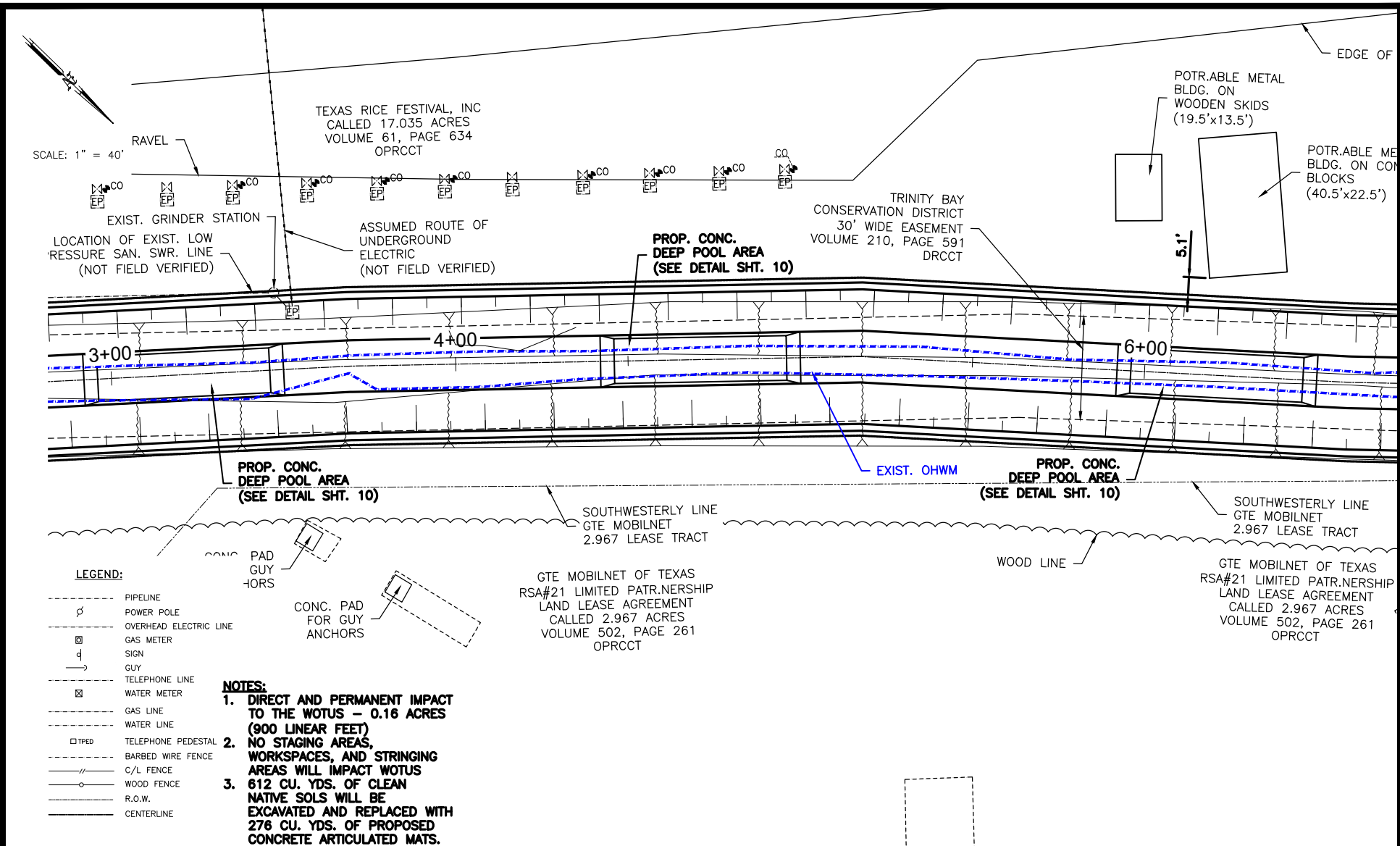
CHAMBERS COUNTY, TEXAS MAYHAW BAYOU DRAINAGE IMPROVEMENTS

LJA Engineering, Inc. **LJA**
2615 Calder Avenue, Suite 500 Phone 409.833.3363
Beaumont, Texas 77702 Fax 409.833.0317
FRN - F-1386

PLAN SHEET STA. 0+00 TO STA. 3+00

| Action | Name | Date |
|----------|----------|---------|
| Design | CC | 10/2025 |
| Drawn | DBT | 10/2025 |
| Checked | CC | 10/2025 |
| Approved | CC | 10/2025 |
| Scale | 1" = 40' | |
| Sheet | 3 | Of 10 |

Plot Date: 10/30/25
C:\PROJECTS\LJA\B000 - CHAMBERS COUNTY\1003 CHAMBERS COUNTY MAYHAW BAYOU DRAINAGE IMPROVEMENTS\CAD\ENVIRONMENTAL\DEEP POOL AREAS.DWG



| REV. | REVISION DESCRIPTION | DATE | NAME |
|------|----------------------|------|------|
| | | | |
| | | | |
| | | | |

CHAMBERS COUNTY, TEXAS MAYHAW BAYOU DRAINAGE IMPROVEMENTS

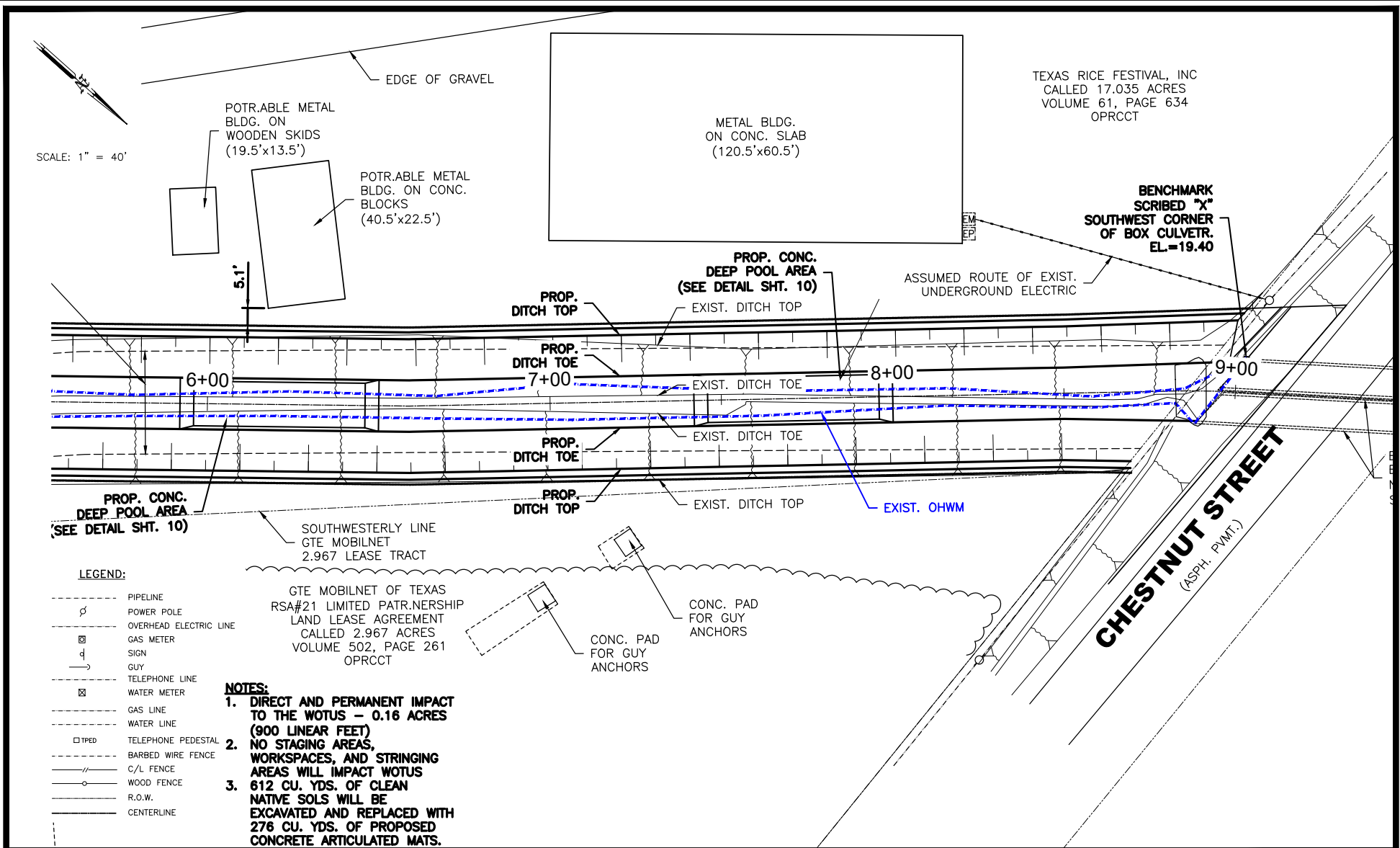
LJA Engineering, Inc.

2615 Calder Avenue, Suite 500 Phone 409.833.3363
Beaumont, Texas 77702 Fax 409.833.0317
FRN - F-1386

PLAN SHEET STA. 0+00 TO STA. 3+00

| Action | Name | Date |
|----------|----------|---------|
| Design | CC | 10/2025 |
| Drawn | DBT | 10/2025 |
| Checked | CC | 10/2025 |
| Approved | CC | 10/2025 |
| Scale | 1" = 40' | |
| Sheet | 4 | Of 10 |

Plot Date: 10/30/25
C:\PROJECTS\LJA\B000 - CHAMBERS COUNTY\B000 - BXXX\B818 - CHAMBERS COUNTY MAYHAW BAYOU DRAINAGE IMPROVEMENTS\CAD\ENVIRONMENTAL\DEEP POOL AREAS.DWG



| REV. | REVISION DESCRIPTION | DATE | NAME |
|------|----------------------|------|------|
| | | | |
| | | | |
| | | | |

CHAMBERS COUNTY, TEXAS
MAYHAW BAYOU DRAINAGE IMPROVEMENTS

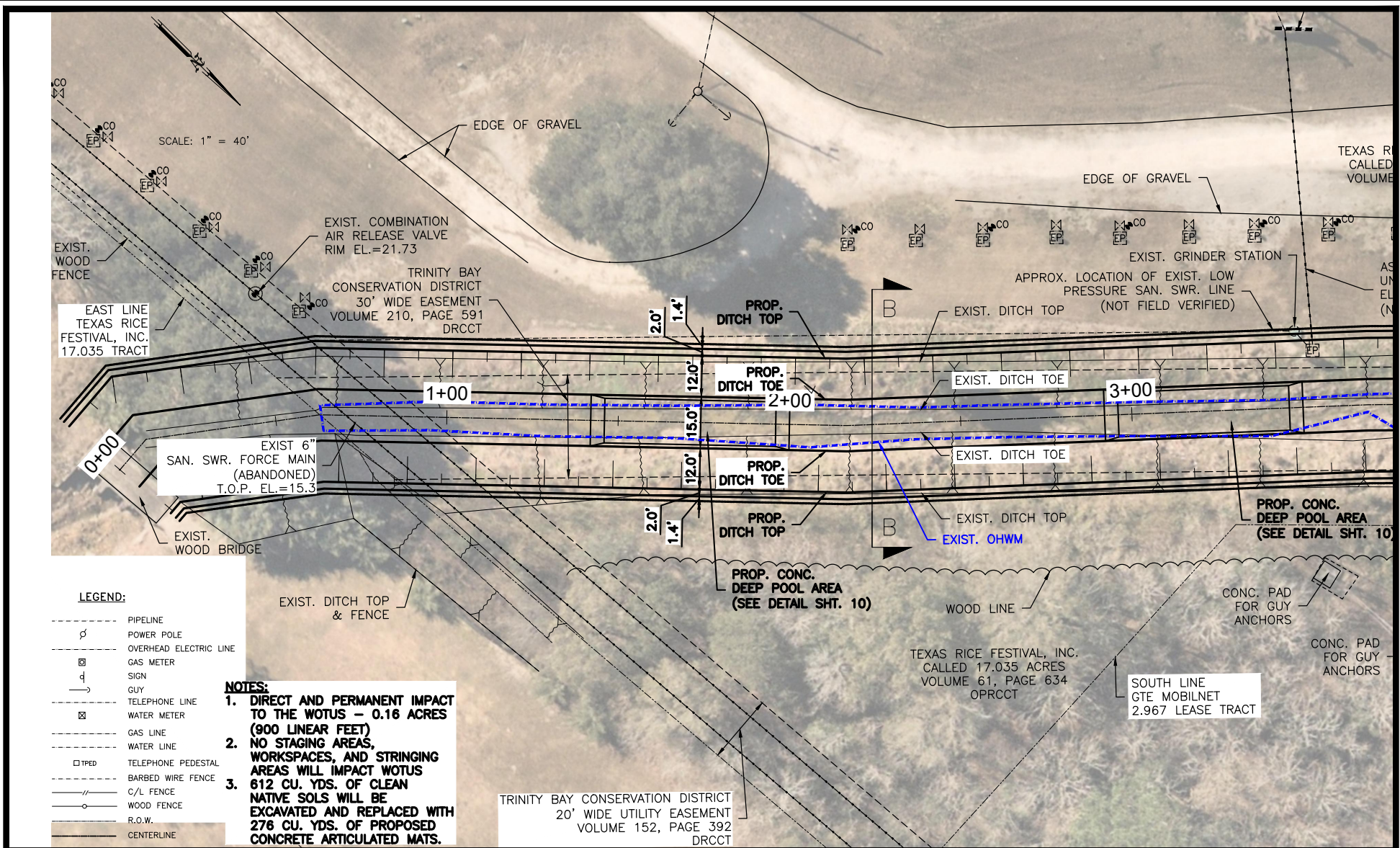
LJA Engineering, Inc.

2615 Calder Avenue, Suite 500 Phone 409.833.3363
Beaumont, Texas 77702 Fax 409.833.0317
FRN - F-1386

PLAN SHEET
STA. 0+00 TO STA. 3+00

| Action | Name | Date |
|----------|----------|---------|
| Design | CC | 10/2025 |
| Drawn | DBT | 10/2025 |
| Checked | CC | 10/2025 |
| Approved | CC | 10/2025 |
| Scale | 1" = 40' | |
| Sheet | 5 | Of 10 |

Plot Date : 10/30/25
C:\PROJECTS\LJA\B000 - CHAMBERS COUNTY\1003 CHAMBERS COUNTY MAHAW BAYOU DRAINAGE IMPROVEMENTS\CAD\ENVIRONMENTAL\DEEP POOL AREAS.DWG



LEGEND:

- PIPELINE
- ⊕ POWER POLE
- OVERHEAD ELECTRIC LINE
- ⊗ GAS METER
- ⊕ SIGN
- GUY
- TELEPHONE LINE
- ⊗ WATER METER
- GAS LINE
- WATER LINE
- TPED TELEPHONE PEDESTAL
- BARBED WIRE FENCE
- C/L FENCE
- WOOD FENCE
- R.O.W.
- CENTERLINE

NOTES:

1. DIRECT AND PERMANENT IMPACT TO THE WOTUS - 0.16 ACRES (900 LINEAR FEET) NO STAGING AREAS, WORKSPACES, AND STRINGING AREAS WILL IMPACT WOTUS
2. 612 CU. YDS. OF CLEAN NATIVE SOLS WILL BE EXCAVATED AND REPLACED WITH 276 CU. YDS. OF PROPOSED CONCRETE ARTICULATED MATS.

TRINITY BAY CONSERVATION DISTRICT
20' WIDE UTILITY EASEMENT
VOLUME 152, PAGE 392
DRCT

| REV. | REVISION DESCRIPTION | DATE | NAME |
|------|----------------------|------|------|
| | | | |
| | | | |
| | | | |

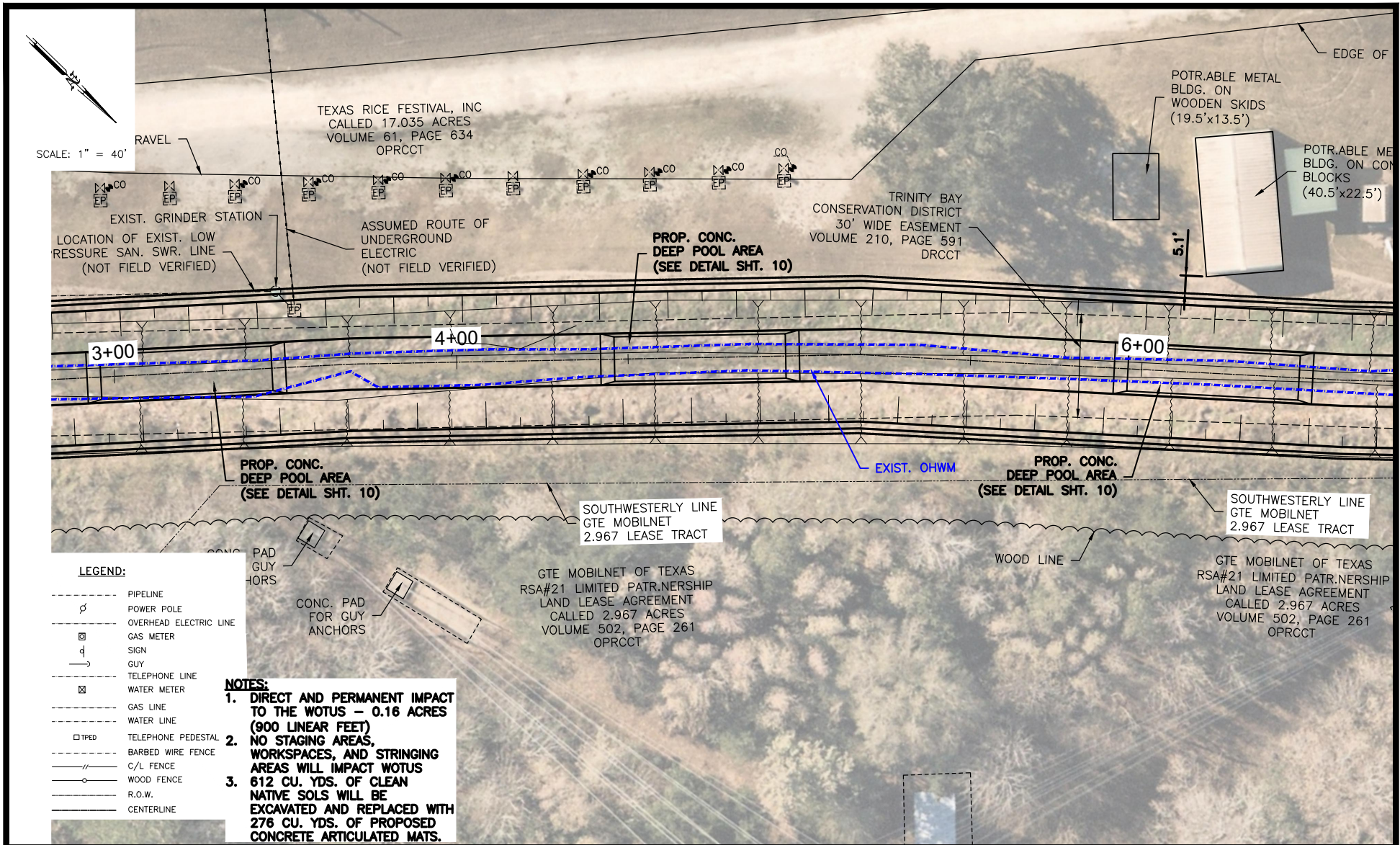
CHAMBERS COUNTY, TEXAS MAYHAW BAYOU DRAINAGE IMPROVEMENTS

LJA Engineering, Inc. **LJA**
2615 Calder Avenue, Suite 500 Phone 409.833.3363
Beaumont, Texas 77702 Fax 409.833.0317
FRN - F-1386

PLAN SHEET STA. 0+00 TO STA. 3+00

| Action | Name | Date |
|----------|----------|---------|
| Design | CC | 10/2025 |
| Drawn | DBT | 10/2025 |
| Checked | CC | 10/2025 |
| Approved | CC | 10/2025 |
| Scale | 1" = 40' | |
| Sheet | 6 | Of 10 |

Plot Date: 10/30/25
C:\PROJECTS\LJA\B000 - CHAMBERS COUNTY\1003 CHAMBERS COUNTY MAYHAW BAYOU DRAINAGE IMPROVEMENTS\CAD\ENVIRONMENTAL\DEEP POOL AREAS.DWG



| REV. | REVISION DESCRIPTION | DATE | NAME |
|------|----------------------|------|------|
| | | | |
| | | | |
| | | | |

CHAMBERS COUNTY, TEXAS MAYHAW BAYOU DRAINAGE IMPROVEMENTS

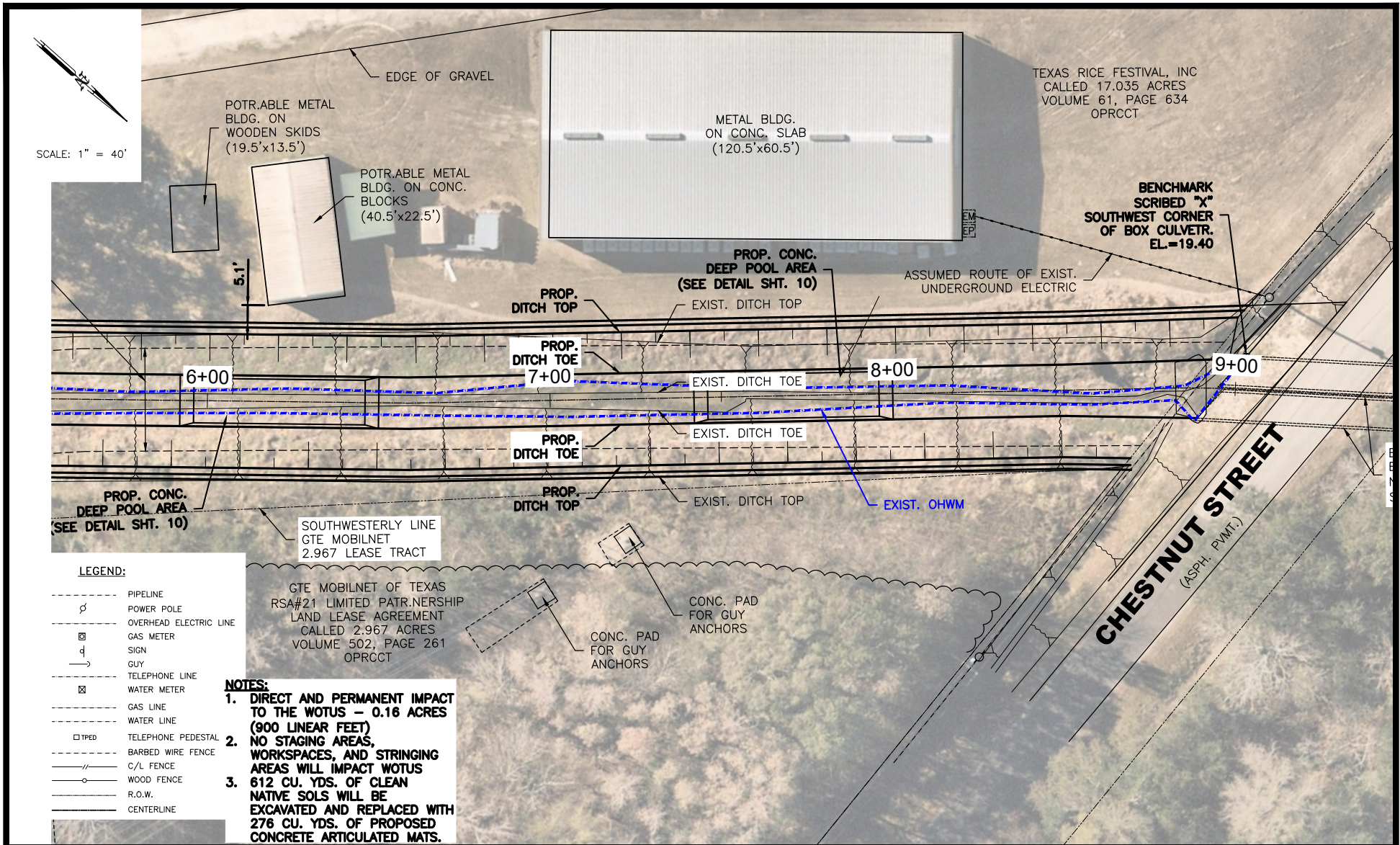
LJA Engineering, Inc.

2615 Calder Avenue, Suite 500 Phone 409.833.3363
Beaumont, Texas 77702 Fax 409.833.0317
FRN - F-1386

PLAN SHEET STA. 0+00 TO STA. 3+00

| Action | Name | Date |
|----------|----------|---------|
| Design | CC | 10/2025 |
| Drawn | DBT | 10/2025 |
| Checked | CC | 10/2025 |
| Approved | CC | 10/2025 |
| Scale | 1" = 40' | |
| Sheet | 7 | Of 10 |

Plot Date: 10/30/25
C:\PROJECTS\LJA\B000 - CHAMBERS COUNTY\B818 - CHAMBERS COUNTY MAYHAW BAYOU DRAINAGE IMPROVEMENTS\CAD\ENVIRONMENTAL\DEEP POOL AREAS.DWG



LEGEND:

- PIPELINE
- ⊕ POWER POLE
- OVERHEAD ELECTRIC LINE
- ⊗ GAS METER
- ⊕ SIGN
- GUY
- TELEPHONE LINE
- ⊗ WATER METER
- GAS LINE
- WATER LINE
- TYPED TELEPHONE PEDESTAL
- BARBED WIRE FENCE
- C/L FENCE
- WOOD FENCE
- R.O.W.
- CENTERLINE

NOTES:

1. DIRECT AND PERMANENT IMPACT TO THE WOTUS - 0.16 ACRES (900 LINEAR FEET)
2. NO STAGING AREAS, WORKSPACES, AND STRINGING AREAS WILL IMPACT WOTUS
3. 612 CU. YDS. OF CLEAN NATIVE SOLS WILL BE EXCAVATED AND REPLACED WITH 276 CU. YDS. OF PROPOSED CONCRETE ARTICULATED MATS.

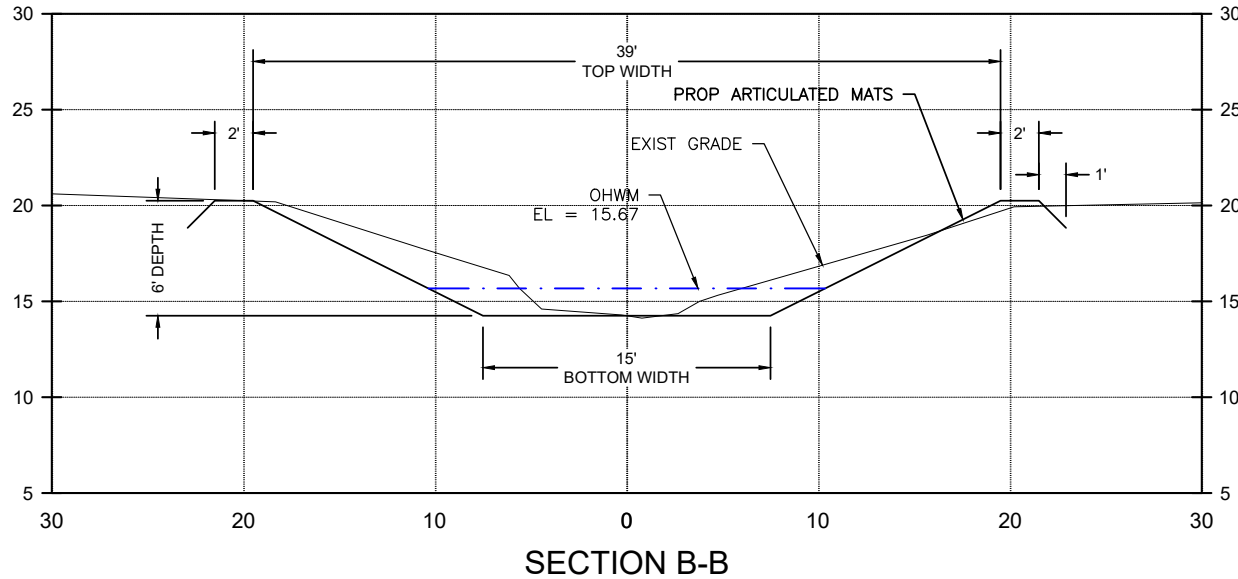
| REV. | REVISION DESCRIPTION | DATE | NAME |
|------|----------------------|------|------|
| | | | |
| | | | |
| | | | |

CHAMBERS COUNTY, TEXAS MAYHAW BAYOU DRAINAGE IMPROVEMENTS

LJA Engineering, Inc.
2615 Calder Avenue, Suite 500 Phone 409.833.3363
Beaumont, Texas 77702 Fax 409.833.0317
FRN - F-1386

PLAN SHEET STA. 0+00 TO STA. 3+00

| Action | Name | Date |
|----------|----------|---------|
| Design | CC | 10/2025 |
| Drawn | DBT | 10/2025 |
| Checked | CC | 10/2025 |
| Approved | CC | 10/2025 |
| Scale | 1" = 40' | |
| Sheet | 8 | Of 10 |



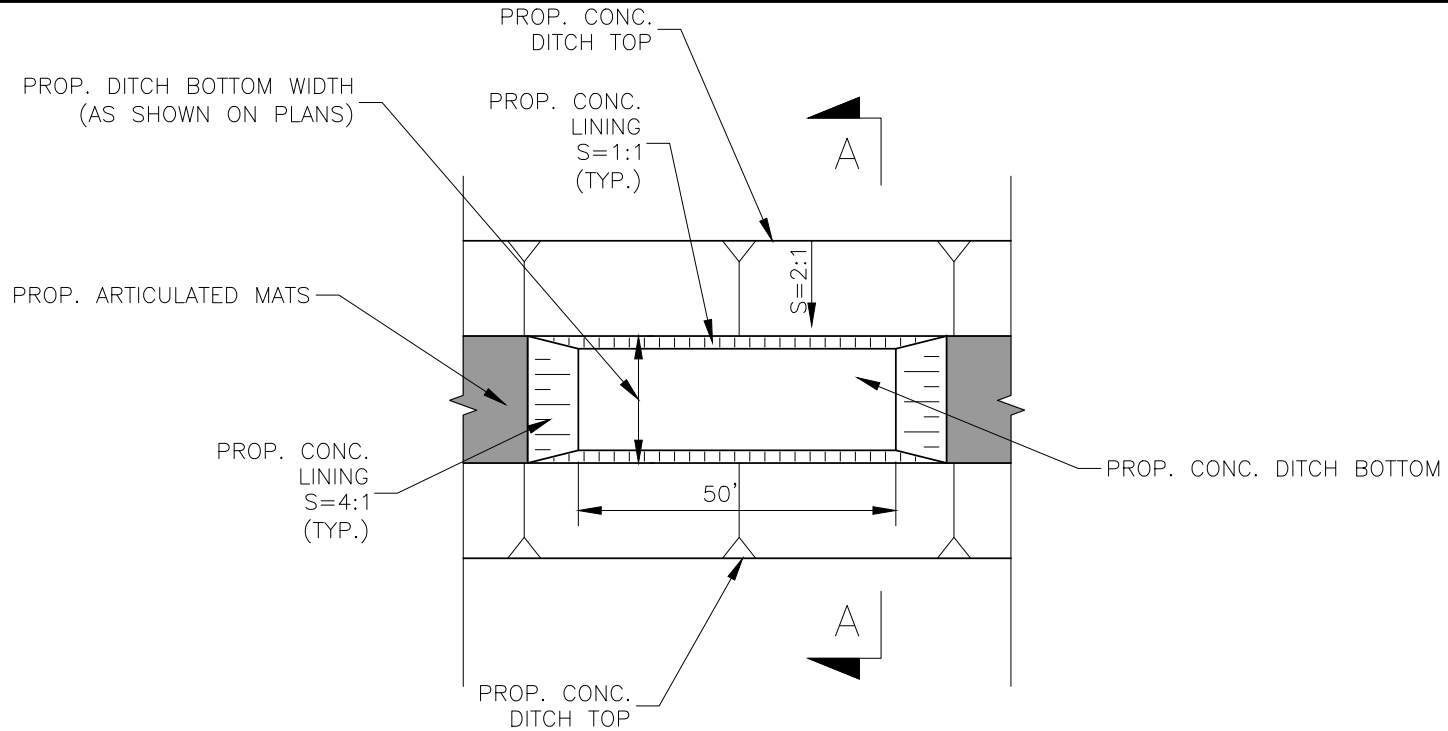
| REV. | REVISION DESCRIPTION | DATE | NAME |
|------|----------------------|------|------|
| | | | |
| | | | |
| | | | |

CHAMBERS COUNTY, TEXAS
MAYHAW BAYOU DRAINAGE IMPROVEMENTS

| Action | Name | Date |
|----------|----------|---------|
| Design | CC | 10/2025 |
| Drawn | DBT | 10/2025 |
| Checked | CC | 10/2025 |
| Approved | CC | 10/2025 |
| Scale | 1" = 10' | |
| Sheet | 9 Of 10 | |

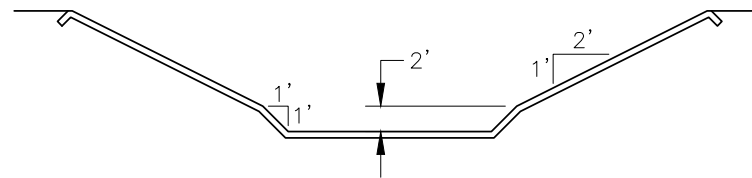
LJA Engineering, Inc. **LJA**
2615 Calder Avenue, Suite 500 Phone 409.833.3363
Beaumont, Texas 77702 Fax 409.833.0317
FRN - F-1386

SECTION B-B
STA. 2+25 ON SHEETS 3 AND 6



CONCRETE DEEP POOL AREA DETAIL

SCALE: 1"=30'



SECTION A-A

NTS

| REV. | REVISION DESCRIPTION | DATE | NAME |
|------|----------------------|------|------|
| | | | |
| | | | |
| | | | |

CHAMBERS COUNTY, TEXAS
MAYHAW BAYOU DRAINAGE IMPROVEMENTS

| Action | Name | Date |
|----------|---------|---------|
| Design | CC | 10/2025 |
| Drawn | DBT | 10/2025 |
| Checked | CC | 10/2025 |
| Approved | CC | 10/2025 |
| Scale | 1" = 5' | |
| Sheet | 10 | Of 10 |

LJA Engineering, Inc.
2615 Calder Avenue, Suite 500
Beaumont, Texas 77702
Phone 409.833.3363
Fax 409.833.0317
FRN - F-1386

PROPOSED DEEP POOL DETAIL